



Zephair™ - Oscillating Floor Model Fan

Service Manual

Section - VI. Owner's Manual

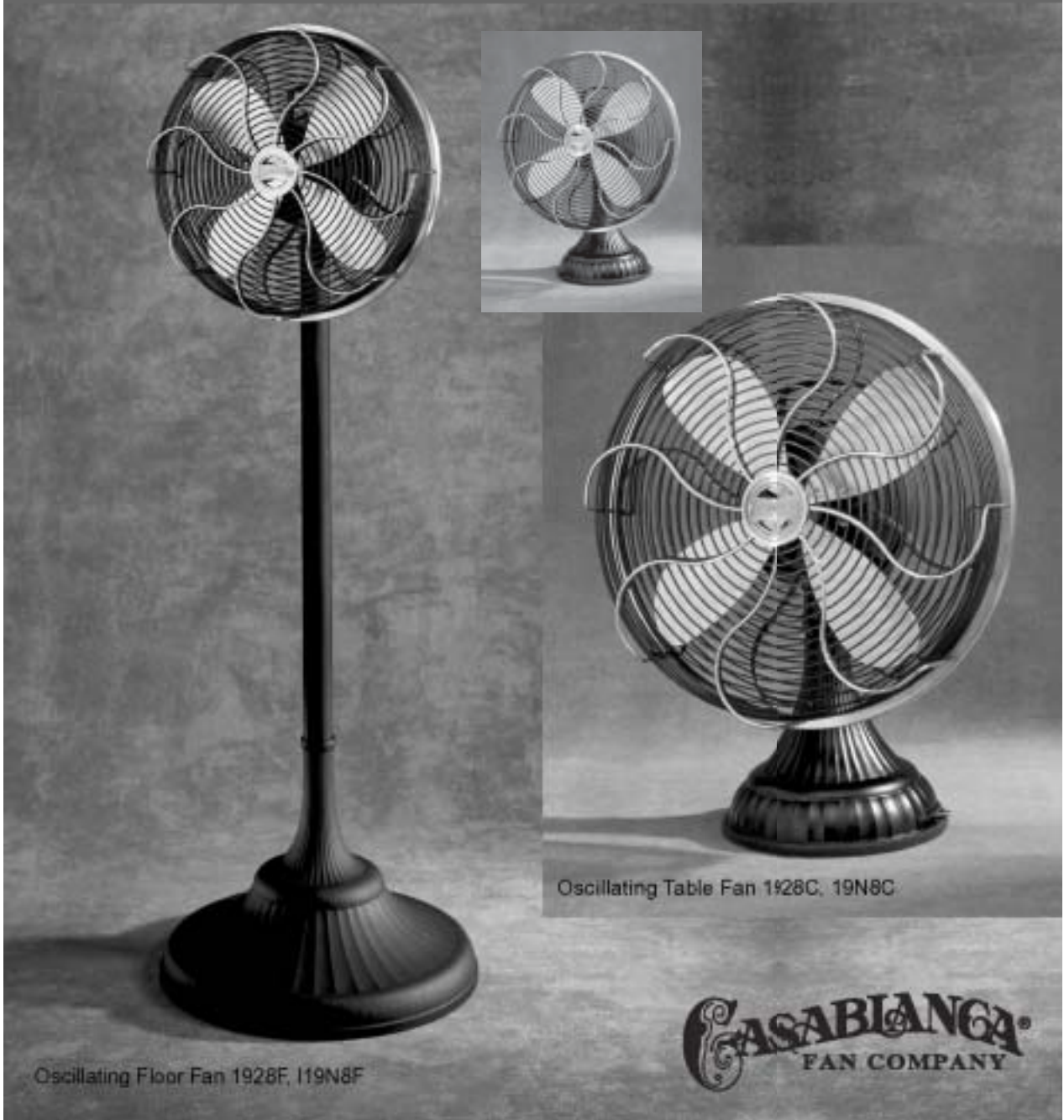


IX - 6.0



Zephair - Oscillating Floor / TABLE Model Fan

OWNER'S MANUAL



Oscillating Floor Fan 1928F, 119N8F

Oscillating Table Fan 1928C, 19N8C



IX - 6.1

761 Corporate Center Dr. • Pomona, CA 91746 • (909) 689-1477 • (800) 498-8482



CAUTION: Read and follow all instructions before operating the fan. Do not use the fan if any part is damaged or missing.

WARNING: To reduce the risk of fire or electric shock, do not use this fan with any solid state speed control device.

READ & SAVE THESE INSTRUCTIONS SAFETY FIRST

IMPORTANT SAFETY INSTRUCTIONS

1. Never insert fingers or any other objects through the cage guard when the fan is in operation.
2. Close supervision is necessary when any appliance is used by or near children.
3. Disconnect the fan when moving from one location to another.
4. Disconnect the fan when removing grill guard for cleaning, servicing, maintenance, and before moving to another location.
5. Be sure the fan is on a stable, flat surface when in operation.
6. DO NOT use the table fan in windows. Rain and moisture may create an electrical hazard.
7. DO NOT operate fan in the presence of explosive and/or flammable fumes.
8. DO NOT place fan or any parts near an open flame, cooking or other heating appliances.
9. DO NOT operate any appliance with a damaged cord or plug, after the appliance malfunctions, or has been dropped or damaged in any manner.
10. To disconnect, grip the plug and pull from wall outlet. Never pull on the cord.
11. To protect against electrical shock, do not immerse the fan, plug, or cord in water or spray with liquids.
12. DO NOT put fan in a damp place or where humidity is high, such as a bathroom.
13. DO NOT use near curtains, plants, window treatments, et cetera.
14. This appliance has a grounded three-prong plug and is suitable for grounded receptacle use only. An adaptor is available from your local hardware store for connecting three-prong grounding-type plugs to two-slot receptacles. The adapter must be properly grounded. DO NOT attempt to defeat the purpose of this safety feature.
15. Improper installation may result in a risk of fire, electrical shock, or personal injury.
16. ALWAYS use on a dry surface.
17. Use fan only for intended use.
18. This product is intended for household use only and not for commercial or industrial use.

ASSEMBLY INSTRUCTIONS

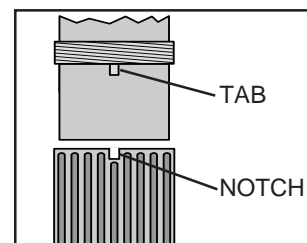
Table & Desk Fan: No assembly required. Please skip to the Important Safety Instructions below.

Floor Fan:

1. Make sure you are familiar with the 3 components: Motor Cage Assembly, Pipe Assembly, and Base Assembly.
2. Lay the Motor Cage Assembly on a flat, protected surface, face down.
3. Take the Pipe Assembly and make sure that the collars on both ends are pulled in enough to expose the notch in the pipe.
4. Take the cord from the Motor Cage Assembly and feed it through the pipe (both ends are the same). Make sure the plug clears the end of the pipe.
5. Align the pipe collar onto the neck post of the Motor Cage Assembly, sliding the tab of the motor cage into the notch of the pipe.
6. Thread the collar and turn the until it is snug.
7. Lay the base of the fan on it's side close to the pipe. The



Step 5

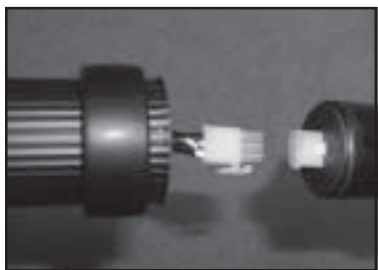


Step 5



Assembly instructions. **(Continued)** -

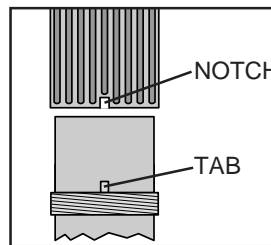
- male pin connector is on the neck of the base, note that one side has a locking tooth.
8. Assure that the latch and locking tooth are matched up and plug the wire from the pipe into the fan base. Move the collar away from the end and slide the pipe onto the fan base, but do not tighten the collar yet.
 9. With one hand hold the handle of the motor cage and with the other hold the neck of the base and tilt the fan up to a standing position.
 10. Align the tab from the base to the notch in the pipe. Thread and tighten the collar for the base of the fan, tighten completely.
 11. Set the floor fan up where the cord will not be in a traffic area or tripped on. Also make sure the oscillation movement of the cage is not impeded in any way.



Step 8



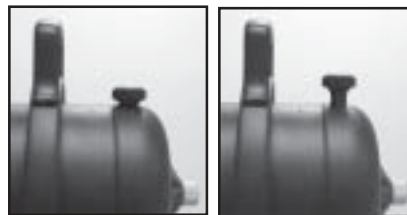
Step 9



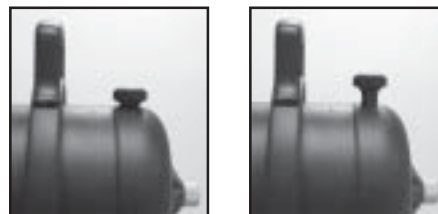
Step 10

OPERATING INSTRUCTIONS

1. Place the fan on a safe, flat surface where it cannot fall or be pulled by the cord.
2. Plug the fan into a grounded outlet.
3. To set the horizontal direction of airflow, hold the fan housing neck in one hand, make sure the oscillating knob is in the up position and then turn the cage left or right.
4. To control the vertical direction of airflow, grip the handle on top of the fan tightly and loosen the wing nut on the side of the fan housing neck. Adjust to the desired angle and tighten the wing nut.



5. To make the fan oscillate, push down on the oscillating knob located on the top of the fan housing, near the handle. To stop the fan from oscillating, pull up on the oscillating knob.





Operating Instructions. (Continued) -

- 6a. To select a speed on the table model move the switch lever located on the base of the fan from OFF to the desired speed setting of 1 (low), 2 (medium) or 3 (high).
- 6b. To select a speed on the floor model, move the switch knob located on the back of the motor housing from OFF to the desired speed setting of 1 (low), 2 (medium) or 3 (high).

FOR TABLE & DESK

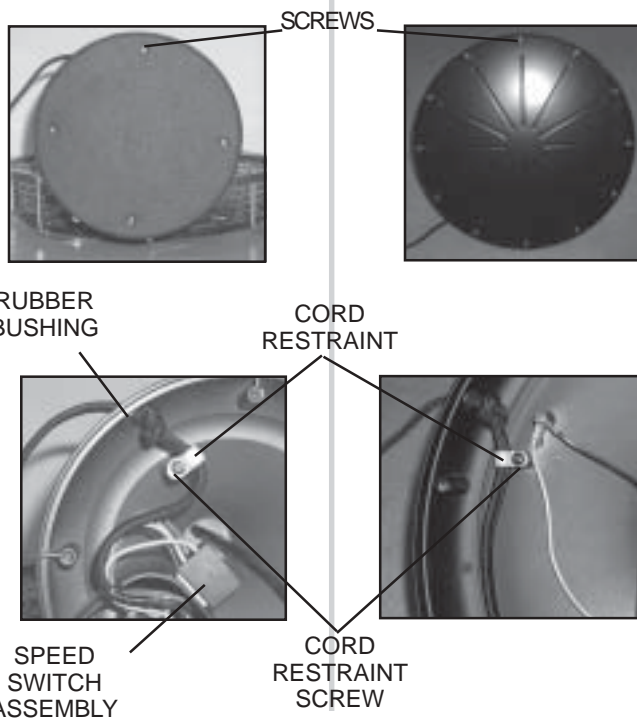


FOR FLOOR FAN:



Table & Floor Fan Only

- 7. OPTIONAL: To store the excess cord, unplug the fan from the wall socket and gently lay the fan on its side, making sure that the cage and motor are properly supported. To remove the base bottom unscrew all of the screws. Remove the cord restraint screw. Gently pull the cord through the bottom rubber bushing (assuring it remains in place) and through the cord restraint until you have the desired length. If the rubber bushing in the base has come loose, reinstall it into the base of the fan. Re-align the cord restraint to the proper position to reattach it to the base with the screw. Feed the excess cord into the neck of the base. For the table fan, keep it away from the speed switch assembly. Replace the base bottom, aligning the screw holes and reinstall the screws, assuring that no wires or cord are pinched.



USER MAINTENANCE & CLEANING

This fan is permanently lubricated and will not require additional lubrication (oil) for the life of the fan. This appliance requires little maintenance and contains no user serviceable parts. Do not try to fix it yourself. Call toll free 1-888-227-2178 and ask a technician for the closest Authorized Casablanca Service Center or visit our web site at www.CasablancaFanCo.com, click on 'Dealers' then follow the directions (making sure to select 'Service Center' in option 3).

TO CLEAN: Before cleaning, turn off the fan and unplug from electrical outlet. Wipe off excess dust with a lint-free cloth. To ensure adequate air circulation to the motor, keep vents located at the rear of the motor housing free from dust accumulation. A vacuum cleaner hose can be used to clear these vents. Do not immerse the fan in water or any other liquid.

WARNING: DO NOT OPERATE FAN WHILE CAGE IS REMOVED FOR CLEANING!





User Maintenance & Cleaning. (Continued) -

CLEANING GRILL AND BLADES: Turn the fan off and unplug from the wall socket. Carefully remove the 8 nuts and washers from the back of the grille and set aside in a safe place. The cage and blades may be cleaned with mild soap and water. Use a soft, slightly damp cloth to wipe the remaining fan parts. Do not allow water or any other liquid to get into the motor housing or base. Reassemble the fan after the cage and blades have dried completely. To do so, align the screws to the holes in the back (assuring the Casablanca logo is not rotated), then place washer over screw and tighten nut as shown above. Do not plug fan into an electrical outlet until it has been fully reassembled.

PRODUCT SPECIFICATIONS

	Table Fan	Floor Fan	Desk Fan		Table Fan	Floor Fan	Desk Fan
Overall Height	21"	54"	16.5"	Oscillating Sweep Angle	90°	90°	55°
Overall Width	17"	18"	12.5"	Horizontal Angle	20°	20°	20°
Overall Depth	11 ⁵ / ₁₆ "	11 ⁵ / ₁₆ "	8"	Electrical Cord	9' 9" cloth-covered grounded plug	9' 9" cloth-covered grounded plug	7' cloth-covered grounded plug
Safety Cage Diameter	15 ³ / ₄ "	15 ³ / ₄ "	11 ³ / ₄ "	Warranty	Lifetime Motor 1 year parts & labor	Lifetime Motor 1 year parts & labor	Lifetime Motor 1 year parts & labor
Blade Diameter	14 ¹ / ₂ "	14 ¹ / ₂ "	10.44"				
Weight	24 lbs	50 lbs	20 lbs				
Motor RPM - Low:	600	600	710				
Motor RPM - Medium:	800	800	1010				
Motor RPM - High:	1200	1200	1310				

WARRANTY

STAPLE PROOF OF PURCHASE TO THIS PAGE • KEEP FOR FUTURE REFERENCE

If purchased from our authorized dealer this portable fan is warranted to the original purchaser by Casablanca Fan Company against defects in materials and workmanship for the following: Lifetime motor warranty, 1 year Parts and Labor.

During the warranty period we repair, or at our option replace at no charge, a defective product.

HOW TO OBTAIN SERVICE:

CONTACT YOUR DEALER FOR THE NAME OF THE NEAREST SERVICE CENTER or CALL TOLL FREE 1-888-227-2178.

Do not return this portable fan without approval from Casablanca Fan Company. Should it become necessary to return your fan to an authorized Casablanca Service Center make sure it is properly packaged to avoid in-transit damage, which is not covered by this warranty.

This warranty does not apply if the product has been damaged by improper installation, neglect, accident, misuse, exposure to extremes of heat or humidity, or as a result of service or modification by other than an authorized Casablanca service center. All costs of installing, removing and reinstalling the product are the responsibility of the owner. Warranty motor repairs must come back to the factory for replacement. Casablanca will not pay for shipping charges incurred in sending the defective product from the customer to Casablanca Fan Co., but will pay for return UPS shipment. No other expressed warranty is given. The repair or replacement of a product is your exclusive remedy. Any implied warranty of merchantability or fitness is limited to the duration of this written warranty. Some states do not allow limitations on how long an implied warranty lasts, so the above limitations may not apply to you. In no event shall Casablanca be liable for consequential or incidental damages. Some states do not allow the exclusion or limitation of incidental or consequential damages, so the above limitation or exclusion may not apply to you. This warranty gives you specific legal rights, and you may also have other rights which vary from state to state.

IX - 6.5